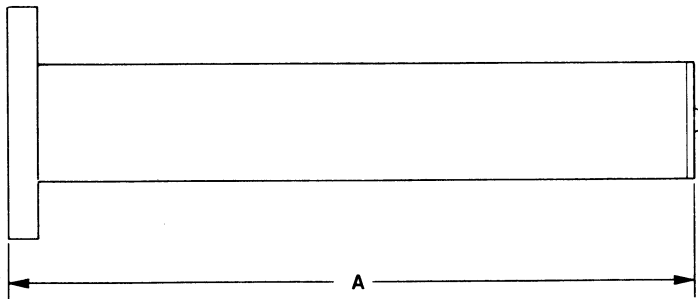


# WAVEGUIDE TERMINATIONS

HIGH POWER

SERIES  
32



## GENERAL INFORMATION

- FULL WAVEGUIDE FREQUENCY RANGE
- NO FORCED AIR COOLING REQUIRED
- UNITS PRESSURIZED UPON REQUEST
- STANDARD EXTERIOR FINISH IS FLAT BLACK HIGH TEMPERATURE ENAMEL
- CAN WITHSTAND 130% POWER LEVELS CONTINUOUSLY WITH NO DAMAGE OR REDUCTION IN PERFORMANCE

## SPECIFICATIONS

BASIC MODEL	FREQ. RANGE (GHz)	EIA DESIG.	VSWR (max.)	AVG. POWER (watts)	WT. <sup>2</sup> (lbs.)	DIM. (inches) A
32M <sup>1</sup>	1.7-2.6	WR430	1.15	200	17	13
32S	2.6-3.95	WR284	1.10	200	7	11.5
32SC	3.3-4.9	WR229	1.10	200	5.5	10
32C	3.95-5.85	WR187	1.10	150	4.5	9
32CA	4.9-7.05	WR159	1.10	150	3.5	8.5
32A	5.85-8.2	WR137	1.10	100	2.5	8.5
32XL	7.05-10	WR112	1.10	100	2	7.5
32X	8.2-12.4	WR90	1.10	100	1.2	6
32XK	10-15	WR75	1.10	100	.6	5
32KU	12.4-18	WR62	1.10	50	.45	4.5
32K	18-26.5	WR42	1.10	50	.3	4.5
32KA	26.5-40	WR28	1.10	25	.25	3.5

## Ordering Code

NOTES: 1 - available in aluminum only  
2 - wt. shown for copper

MODEL	FLANGE	MAT'L	FINISH
FROM ABOVE	1 - CPRF 2 - CPRG 3 - COVER 4 - CHOKE 5 - SPECIAL	A - ALUM B - BRASS C - COPPER D - SPECIAL	1 - IRIDITE 2 - SILVER 3 - SPECIAL

**INTERNATIONAL TELECOMMUNICATION COMPONENTS, INC.**

94B East Jefryn Blvd., Deer Park, NY 11729

(516) 243-1444

FAX (516) 595-9160

**I T C**