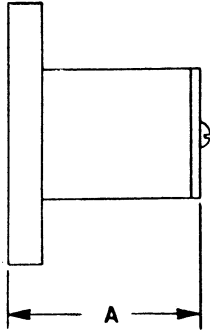


WAVEGUIDE STUB TERMINATIONS

LOW POWER

SERIES
33



GENERAL INFORMATION

- DESIGNED FOR OPTIMUM PERFORMANCE OVER MOST COMMONLY USED BANDS
- UNITS PRESSURIZED UPON REQUEST
- STANDARD EXTERIOR FINISH IS FLAT BLACK POLYURETHANE ENAMEL COLOR 37038 PER FED-STD-595
- IDEAL FOR TIGHT LOCATIONS

SPECIFICATIONS

BASIC MODEL	FREQ. RANGE (GHz)	EIA DESIG.	VSWR (max.)	AVG. POWER (watts)	WT. ¹ (lbs.)	DIM. (inches) A
33SC	3.7-4.2	WR229	1.13	20	4	3
33C	5.0-6.0	WR187	1.15	12	3.5	3
33CA	5.9-6.5	WR159	1.07	10	2.5	2
33A	5.9-6.5	WR137	1.07	10	2.0	1.5
33XL	7.25-8.4	WR112	1.13	7	1.2	1.5
33X	11.7-12.2	WR90	1.10	6	.75	1.5
33XK	11.7-12.2	WR75	1.07	5	.45	1.25
33XK1	14.0-14.5	WR75	1.07	5	.45	1.25
33KU	14.0-14.5	WR62	1.07	4	.30	1

Ordering Code

NOTES: 1 - wt. shown for copper

MODEL	FLANGE	MAT'L	FINISH
FROM ABOVE	1 - CPRF	A - ALUM	1 - IRIDITE
	2 - CPRG	B - BRASS	2 - SILVER
	3 - COVER	C - COPPER	3 - SPECIAL
	4 - CHOKE	D - SPECIAL	
	5 - SPECIAL		

INTERNATIONAL TELECOMMUNICATION COMPONENTS, INC.

94B East Jefryn Blvd, Deer Park, NY 11729

(516) 243-1444

FAX (516) 595-9160

I T C