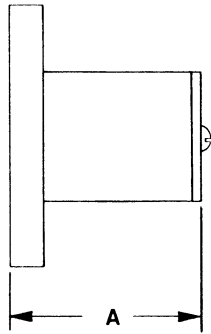


WAVEGUIDE STUB TERMINATIONS

MEDIUM POWER

SERIES
34



GENERAL INFORMATION

- DESIGNED FOR OPTIMUM PERFORMANCE OVER MOST COMMONLY USED BANDS
- UNITS PRESSURIZED UPON REQUEST
- STANDARD EXTERIOR FINISH IS FLAT BLACK POLYURETHANE ENAMEL COLOR 37038 PER FED-STD-595
- IDEAL FOR TIGHT LOCATIONS

SPECIFICATIONS

BASIC MODEL	FREQ. RANGE (GHz)	EIA DESIG.	VSWR (max.)	AVG. POWER (watts)	WT. ¹ (lbs.)	DIM. (inches) A
34SC	3.7-4.2	WR229	1.20	60	4	3
34C	5.0-6.0	WR187	1.20	50	3.5	3
34CA	5.9-6.5	WR159	1.10	50	2.5	2
34A	5.9-6.5	WR137	1.10	50	2.0	1.5
34XL	7.25-8.4	WR112	1.15	35	1.2	1.5
34X	11.7-12.2	WR90	1.10	35	.75	1.5
34XK	11.7-12.2	WR75	1.10	30	.45	1.25
34XK1	14.0-14.5	WR75	1.10	30	.45	1.25
34KU	14.0-14.5	WR62	1.10	25	.30	1

NOTES: 1 - wt. shown for copper

Ordering Code

MODEL	FLANGE	MAT'L	FINISH
FROM ABOVE	1 - CPRF 2 - CPRG 3 - COVER 4 - CHOKE 5 - SPECIAL	A - ALUM B - BRASS C - COPPER D - SPECIAL	1 - IRIDITE 2 - SILVER 3 - SPECIAL

INTERNATIONAL TELECOMMUNICATION COMPONENTS, INC.

94B East Jefryn Blvd., Deer Park, NY 11729

(516) 243-1444

FAX (516) 595-9160

I T C