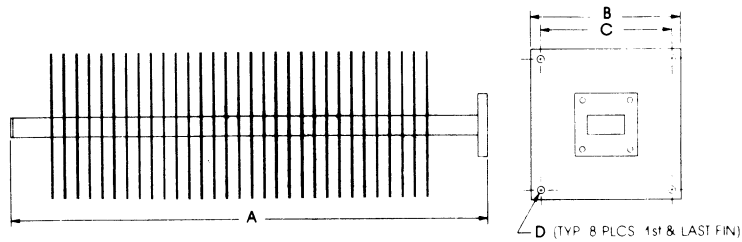


# WAVEGUIDE DUMMY LOADS

## HIGH POWER

SERIES  
37



### GENERAL INFORMATION

- ALL ALUMINUM CONSTRUCTION
- COMPUTER DESIGNED FINS FOR OPTIMUM HEAT DISSIPATION
- LOWER VSWR OVER NARROWER BANDS
- UNITS PRESSURIZED UPON REQUEST
- STANDARD EXTERIOR FINISH IS FLAT BLACK HIGH TEMPERATURE ENAMEL
- NO FORCED AIR COOLING REQUIRED

## SPECIFICATIONS

BASIC MODEL	FREQ. RANGE (GHz)	EIA DESIG.	VSWR (max.)	AVG. POWER (watts)	DIM. (inches)			
					A	B	C	D
37M <sup>1</sup>	1.7-2.6	WR430	1.10	5000	30	8	7	.265
37S	2.6-3.95	WR284	1.10	4000	18	7.5	6.5	.265
37SC	3.3-4.9	WR229	1.10	4000	24	7.5	6.5	.265
37C	3.95-5.85	WR187	1.10	3500	14	5	4	.265
37CA	4.9-7.05	WR159	1.10	3500	19	5	4	.265
37A	5.85-8.2	WR137	1.10	3500	19	5	4	.265
37XL	7.05-10	WR112	1.10	2200	19	5	4	.265
37X	8.2-12.4	WR90	1.10	2200	19	5	4	.265
37XK	10-15	WR75	1.10	2200	19	5	4	.265
37KU	12.4-18	WR62	1.10	2200	19	5	4	.265

## Ordering Code

NOTES: 1 - available in aluminum only

MODEL	FLANGE	MAT'L	FINISH
FROM ABOVE	1 - CPRF 2 - CPRG 3 - COVER 4 - CHOKE 5 - SPECIAL	A - ALUM	1 - IRIDITE 2 - SILVER 3 - SPECIAL

**INTERNATIONAL TELECOMMUNICATION COMPONENTS, INC.**

94B East Jefryn Blvd. Deer Park, NY 11729

(516) 243-1444

FAX (516) 595-9160

**I T C**